

CERTIFIED TROPICAL WOOD MORE THAN JUST WOOD



FAIR &
PRECIOUS
BY **atibt**

2016 > 2026
YEARS



FAIR&PRECIOUS

THE COLLECTIVE FOR SUSTAINABLE FOREST MANAGEMENT IN TROPICAL AREAS.

Fair&Precious is:

- An initiative by certified forest managers who are members of ATIBT.
- Committed to expanding certified forest areas that promote sound environmental and socioeconomic practices.
- The promotion of FSCTM and PEFC labels.
- Support from international donors (European Union, AFD, KFW, GIZ, etc.) and partnerships with scientific institutions (CIRAD, Gembloux, etc.) and environmental NGOs (WWF, WCS, etc.).
- 10 commitments that uphold a responsible model and showcase an exceptional material.

www.fair-and-precious.org

THE 10 COMMITMENTS

OF THE FAIR&PRECIOUS COLLECTIVE MEMBERS
COMMITTED TO SUSTAINABLE FOREST MANAGEMENT

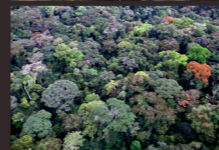
01

MANAGING AND PROTECTING FORESTS
TO COMBAT GLOBAL WARMING



02

PRESERVING FOREST RESOURCES BY
HARVESTING LESS THAN NATURAL GROWTH



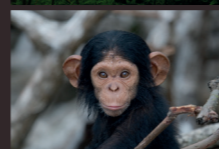
03

EXPANDING BIODIVERSITY KNOWLEDGE
TO SUPPORT SPECIES RECOVERY



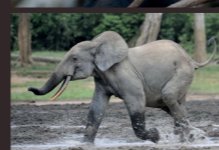
04

ENSURING THE MAINTENANCE OF WILDLIFE HABITAT



05

IMPLEMENTING PROGRAMS TO COMBAT POACHING



06

CONTRIBUTE TO THE WELL-BEING OF
POPULATIONS BY FACILITATING THEIR ACCESS
TO EDUCATION, HEALTHCARE, AND HOUSING



07

STRENGTHENING LOCAL ECONOMIES BY PROMOTING
FORESTRY AND LOCAL WOOD PROCESSING



08

SET UP TRAINING COURSES IN FORESTRY
AND WOOD-RELATED PROFESSIONS



09

SHARING TECHNICAL EXPERTISE ON THE DIVERSITY
AND USES OF TROPICAL WOOD SPECIES



10

PROMOTE RESPONSIBLE PURCHASING
OF AN EXCEPTIONAL MATERIAL

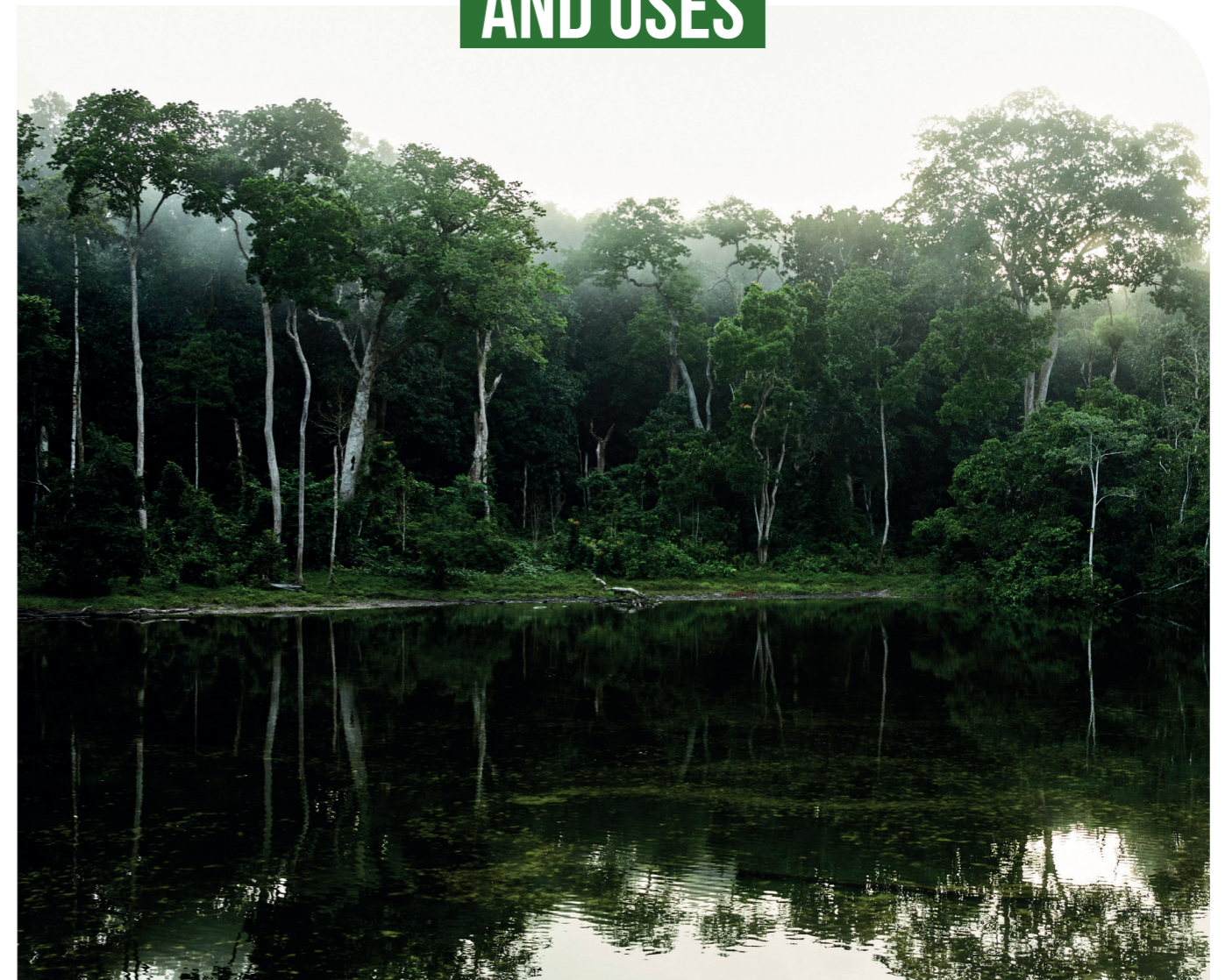


The Forest Stewardship Council™ (FSC™) promotes environmentally appropriate, socially beneficial, and economically viable forest management worldwide. FSC™ certification ensures that forests and supply chains are independently audited, and helps to increase transparency and responsible practices from the forest to the finished product. Find out more: www.fsc.org. FSC® N003381



PEFC (Programme for the Endorsement of Forest Certification) is an international organization that promotes the development of sustainable forest management. It certifies forests and the chain of custody for wood, ensuring that wood and paper products come from responsible and environmentally friendly sources. Find out more: <https://pafc-certification.org/>

THE SPECIES AND USES



TROPICAL WOOD SPECIES

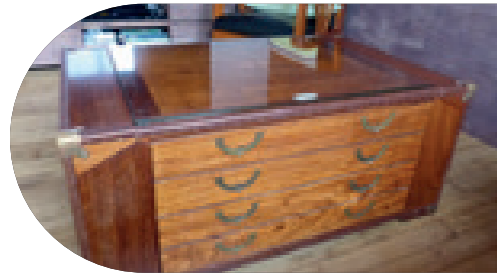
The forests of the Congo Basin offer a wide variety of sustainably managed species, covering over sixty species used in construction, joinery, furniture, and outdoor applications. These woods are distinguished by their natural strength, exceptional durability, and aesthetic qualities.

Among the best known and most widely traded species are: **Okoumé, Sapelli, Sipo, Tali, Azobé, Padouk, Iroko, Doussié, Bossé clair, Okan, Fraké, Bibolo, and Moabi.**

Some of these species are listed in CITES in order to control international trade in potentially endangered species and ensure their sustainable exploitation.

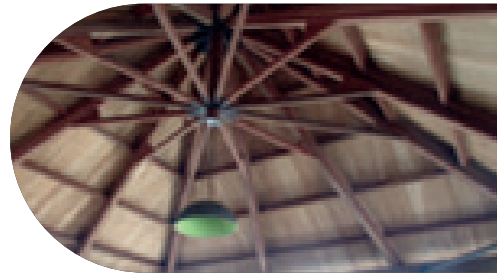
One of the central objectives of sustainable management is to diversify uses in order to reduce pressure on focus on the most popular species. It is within this framework that ATIBT supports the LKTS (Lesser-Known Timber Species) project, which promotes lesser-known species that deliver strong technical and commercial performance.

USES OF TROPICAL WOODS



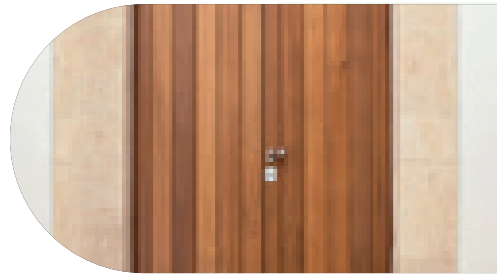
Use class 1: situations in which the wood is sheltered, fully protected from the elements, and not exposed to moisture.

Examples: parquet flooring, furniture, paneling, etc.
Photo 8: Furniture © F. Codro



Use class 2: situations in which the wood is sheltered, fully protected from the weather, but where high ambient humidity can lead to occasional, non-persistent moisture.

Examples: roof structures, roofing elements, etc.
Roof truss © P. Martin



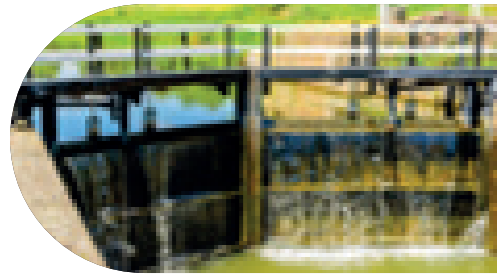
Use class 3.1: situations in which the wood is unprotected, not in contact with the ground, and exposed to the elements, or protected but subject to frequent moisture.

Examples: joinery, exterior cladding (partially sheltered), etc.
Exterior door © Doorwin



Use class 3.2: situations in use class 3.1 but with longer periods of moisture exposure.

Examples: joinery, exterior cladding (exposed to the elements), etc.
Privacy screen © E. Groutel



Use class 4: situations in which the wood is in contact with the ground or fresh water and is therefore constantly exposed to constant moisture.

Examples: fences, posts, terraces, etc. *Lock © Imfoto*

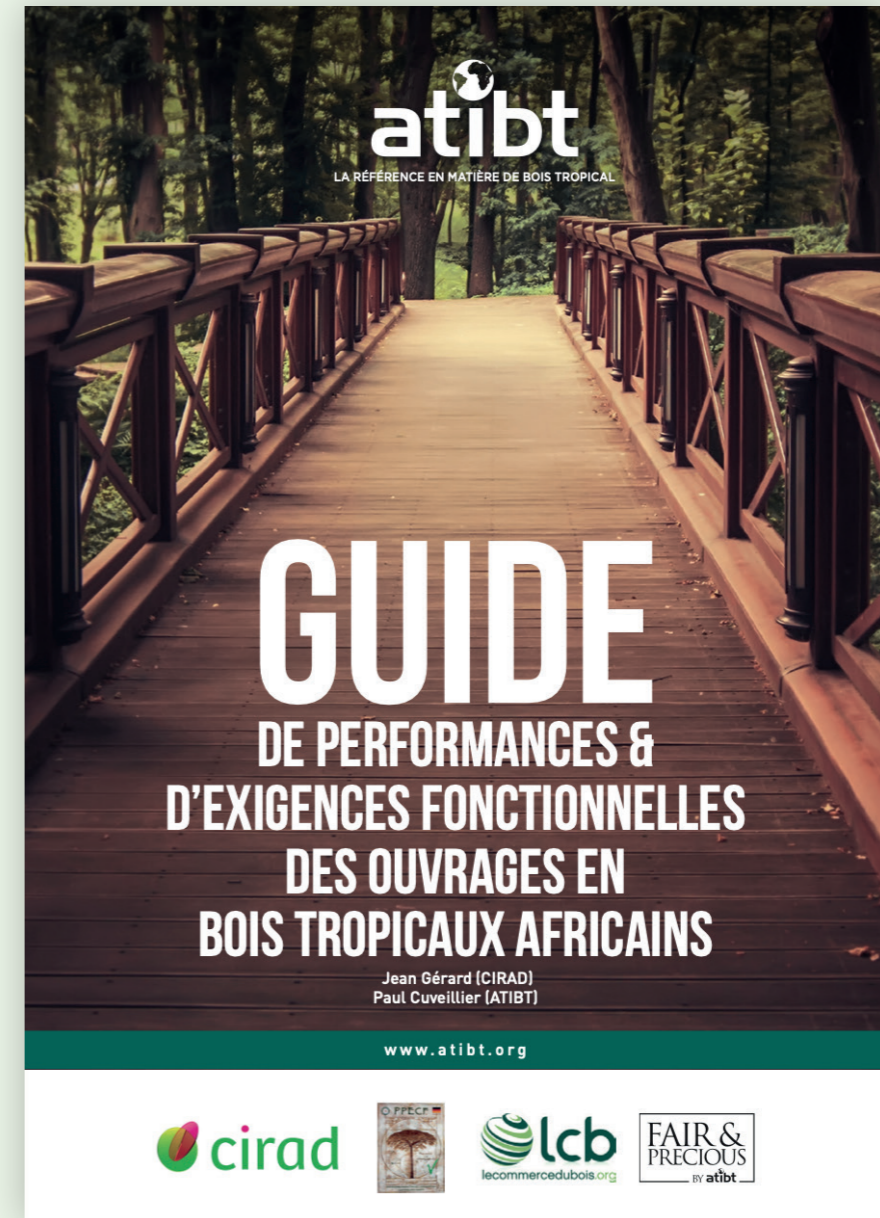


Use class 5: situations in which the wood is in contact with saltwater or brackish water.

Examples: jetties, pontoons, etc.
Fenders © G. Scherrer

NF EN 335 (May 2013) — Durability of wood and wood-based products: Use classes, definitions, and application to solid wood and wood-based materials

THE USER GUIDE TROPICAL TIMBER



THE BEST PRODUCT FOR THE BEST USE.

A practical guide for drafting procurement specifications for tropical wood products that meet regulatory requirements and come from sustainably managed forests.

The **Guide to Performance & Functional Requirements for African Tropical Wood Structures**, published by ATIBT, is a reference work for project owners, architects, specifiers, and professionals who wish to incorporate tropical wood into their projects.

It was produced by CIRAD with the support of PPECF (German cooperation) and the assistance of LCB (Le Commerce du Bois).

<https://www.atibt.org/fr/news/13613/les-guides-de-l-atibt>

A GUIDE TO FACILITATING THE USE OF TROPICAL WOOD



In response to the growing complexity of drafting technical specifications (CCTP) and tightening traceability and sustainability requirements, this guide offers concrete solutions for specifiers, project owners, and project managers. It establishes technical specifications grounded in the performance and functional requirements of tropical wood, aligned with European and national regulatory frameworks, in particular the **European Union Deforestation Regulation (EUDR)** and new environmental standards.

The different types of tropical wood structures

The guide defines the performance and functional requirements for the main product families:

- Terraces, decking, and flooring
- Jetties, walkways, and pathways over water
- Guardrails, balustrades, and other vertical fall protection devices
- Stairs and tiered decking
- Windows, exterior doors, closures, and joinery assemblies
- Cladding and exterior finishes
- Street furniture
- Outdoor furniture
- Landscaping works and structures
- Parquet and flooring
- Interior cladding Hydraulic structures
- Wood framing and structures

See also: [GUIDE TO USING ECOCERTIFIED AFRICAN WOODS](#)

MEMBERS OF THE COLLECTIVE FAIR&PRECIOUS



Olam Agri - REPUBLIC OF CONGO



Olam Agri manages 2.1 million hectares of tropical forests in the Republic of Congo, including a concession entirely dedicated to conservation. With nearly 1,700 employees, the company is FSC™ and PEFC certified and combines sustainable forest management, conservation, and industrial processing on a large scale. Its approach centres on long-term management: very low harvesting rates, reduced-impact logging, protection of future crop trees, and detailed mapping of sensitive areas — all ensuring the long-term sustainability of resources and supply. Olam Agri relies on an integrated value chain with sawmills, dryers, and processing units located at the heart of the concessions, ensuring traceability, technical quality, and regulatory compliance. As a key player in forest areas, the company implements social programs (health, WASH, education, support for indigenous populations) and actively protects wildlife in partnership with authorities and specialized organizations.

Text courtesy of Olam Agri



IHC - REPUBLIC OF CONGO



The development of a 1.16 million hectare natural forest in the Republic of Congo Brazzaville is at the heart of INTERHOLCO and its subsidiary IFO. As an FSC™ (Forest Stewardship Council™, FSC™ C022952) certified producer, PEFC (15-31-0084) and PAFC, INTERHOLCO is a recognized and identified player in the marketing of its products, including edged logs, sawn timber, glued laminated timber, decking and terrace boards, etc. We champion high-value, Made-in-Africa wood products and accompanied by an environmental and health performance declaration (FDSE). Our teams carefully manage the supply chain from the forest to the customer. Our commitment to people is best illustrated by our work improving living conditions for communities in the Ngombe region. We offer support to shape and build a healthy living environment using bio-based and eco-friendly materials, one of the real solutions for the planet and the climate.

Text courtesy of Interholco

AlpiCAM. - CAMEROON



The ALPI Group, present in Cameroon since 1975, manages 353,388 hectares of FSC™-certified land. Through Alpi Pietro & Fils Cameroon, GrumCAM, and ALPIcam Industries, it has established itself as a leading player in veneer, plywood, sliced wood, and finished products for more than 15 countries.

The company integrates forestry operations, local processing, and technical innovation, while promoting a wide variety of species.

ALPIcam invests in the modernization of its facilities, training, quality, and regional roots. Its commitment to sustainable management and local development makes it a key player in the Cameroonian timber industry.

Text courtesy of ALPIcam



- CAMEROON



SEEF, founded in 1994 and acquired by the F JAMES group in 2001, is a key player in sustainable forest management in Cameroon. The company manages 257,051 hectares and relies on constant investment to modernize its sawing lines, industrial units, and dryers. PEFC certified, SEEF promotes a wide variety of species, including fraké, tali, iroko, and mahogany.

Its approach is built on resource conservation, continuous improvement, and deep local roots. The company aims to increase local processing and consolidate best practices in reforestation, anti-poaching, and social support for riverside communities.

Text courtesy of SEEF



- CAMEROON



Pallisco, founded in 1972, operates in Cameroon's Littoral and East regions. It manages seven concessions covering an area of 388,949 hectares. Its subsidiary, CIFM (Centre Industriel et Forestier de Mindourouil), based in Cameroon's Littoral and East regions, is responsible for the primary and secondary processing and sale of wood products on local and international markets.

It processes only logs from PALLISCO concessions and markets more than 25 species, including wamba, tali, sipo, sapelli, padouk, osanga, okan, and moabi.

The group has 510 employees and carries out exemplary actions in terms of resource conservation and support for local populations. PALLISCO and CIFM have been FSC™ certified since 2008.

Text courtesy of Pallisco



- PERU



Maderacre, a major player in sustainable timber in Peru, manages more than 220,000 hectares of FSC™ - certified concessions in Madre de Dios.

Its model integrates low-impact forest management, local processing, value-added products, and energy recovery through briquettes. Maderacre supplies international markets with species such as Cumaru, Shihuahuaco, and Garapa.

The company plays a pivotal role in combating deforestation through REDD+ carbon projects that prevent millions of tonnes of CO₂ emissions. It contributes significantly to local employment, the conservation of Amazonian forests, and regional socio-economic development.

Text courtesy of Maderacre



PRECIOUS WOODS

- GABON



Founded in 1990, the company's core business is producing and marketing semi-finished tropical timber holding dual FSC™ and PEFC-PAFC Congo Basin certification.

Precious Woods Gabon-CEB manages 601,500 hectares in eastern Gabon, where it harvests approximately 200,000 cubic meters of timber each year. With 650 Employees, it operates three sawmills, its own veneer plant for the production of certified rotary-cut veneer, and provides reforestation services.

Local communities receive financial contributions linked to timber volumes harvested. Community representatives voice the population's needs and develop projects co-funded by Precious Woods.

Text courtesy of Precious Woods



PRECIOUS WOODS

MIL MADEIRAS - BRAZIL



Mil Madeiras Preciosas, founded in 1994 in Brazil and a subsidiary of the Precious Woods group, manages FSC™ and PEFC certified forests in the state of Amazonas.

The first Brazilian company to obtain FSC™ certification, in 1997, it promotes a wide variety of species and processes wood locally using high-performance industrial units. Residues are used to fuel a 9MW cogeneration plant.

Mil Madeiras actively contributes to the protection of biodiversity, supports the fight against illegal logging, provides reforestation services, and develops carbon projects. Its model combines sustainability, energy innovation, and positive socio-economic impacts.

Text courtesy of Mil Madeiras Preciosas



Rougier Gabon - GABON

Gérer la forêt, faire vivre le bois



With operations in Gabon and Congo, the Rougier Group manages more than 1.48 million hectares of FSC™ - certified concessions. A long-established industry leader, its model is built on management plans covering 100% of its concessions, with a focus on ecosystem conservation, community development, and respect for local populations.

Its production is based on controlled harvesting, compatible with the natural regeneration of forests. Rougier invests in industrial modernization, environmental innovation, and the promotion of lesser-known species. Committed to anti-poaching, social management, and habitat protection, the group remains a benchmark in the Congo Basin.

Text courtesy of Rougier Gabon



Mokabi - CONGO

Gérer la forêt, faire vivre le bois



Rougier Congo – Mokabi S.A. manages the Mokabi-Dzanga UFA, a 586,330-hectare concession located in the north of the Republic of Congo. A subsidiary of the Rougier Group, the company is FSC™ certified and applies a sustainable management model based on management plans covering 100% of the concession. Its approach is based on highly controlled harvesting, low-impact logging, protection of high conservation value areas, and promotion of lesser-known species, contributing to ecosystem preservation and the long-term sustainability of the resource.. The wide variety of tree species available in the Mokabi forest concession (azobe, bossé, dabema, diana celtis, dibetou, étimoé, fraké, kotibé, kossipo, limbali, manilkara, mukulungu, padouk, sapelli, sipo, tchitola, niove, tali, etc.) perfectly complements Rougier Gabon's product range and enables the Rougier Group to secure the widest selection of FSC-certified species in the Congo Basin.

Text courtesy of Mokabi S.A.

SUSTAINABLE MANAGEMENT **IN FIGURES**

One tree
harvested per
hectare every
25 to 30 years

More than
7 million hectares
certified by FSC™
and/or PEFC by
the end of 2025

6,500 direct
jobs in forest
concessions
and 22,000
indirect jobs

100% of compa-
nies certified in
accordance with
the EU Timber
Regulation

SUSTAINABLE FOREST MANAGEMENT **IN ACTION**

ANTI-POACHING EFFORTS

Certified companies actively combat poaching through eco-guard patrols, partnerships with government agencies and NGOs, and the use of camera traps. Awareness-raising among employees and local communities reinforces protection of endangered species across hundreds of thousands of hectares.



SOCIAL ACTIONS

Operators invest heavily in health, education, and local infrastructure: medical centers, schools, libraries, WASH (water, sanitation, and hygiene) programs, roads, and access to drinking water. They support local and indigenous communities through FPIC (free, prior, and informed consent), and by improving access to healthcare, income, housing, and food security.

REPLANTING & SUSTAINABLE RESOURCE MANAGEMENT

Certified forest management is based on rigorous inventories, very low harvesting rates, protection of sensitive areas, and promotion of lesser-known species (LKTS). Several companies participate in reforestation programs and carbon projects, contributing to natural regeneration and ecosystem resilience.



VALUE CREATION & LOCAL JOBS

By investing in sawmills, drying facilities, moulding, and engineered wood production, companies are strengthening local processing capacity and creating thousands of skilled jobs. These investments increase added value in the region, support technical training, and boost the economy in forest areas.

The Fair&Precious collective is supported by the ATIBT (International Technical Association for Tropical Timber), founded in 1952, which brings together 167 members — industry stakeholders and champions of the tropical timber sector and maintains an active partnership with governments, NGOs, and research and training organizations in the field of sustainable forest management.


atibt

FOR SUSTAINABLE MANAGEMENT OF TROPICAL FORESTS

45 bis, Avenue de la Belle Gabrielle - 94736 Nogent-sur-Marne CEDEX • FRANCE

Tél. : +33 1 43 94 72 60 | www.atibt.org



This brochure is funded by the German Federal Ministry for Economic Cooperation and Development (BMZ) and supported by the Deutsche Gesellschaft für Internationale Zusammenarbeit (GIZ) GmbH